



LINCOLN PREPARATORY ACADEMY

A GREAT HEARTS SCHOOL

2024-2025 ACADEMIC YEAR
LINCOLNPREP.GREATHEARTSAMERICA.ORG

2250 S. Gilbert Road
Chandler, AZ 85286
480-424-1796

Mr. Eric Tope
Headmaster
ETope@lincolnprep.org

Mr. Kevin Gonzalez
Director of College Counseling
KRandolphGonzalez@lincolnprep.org

Academy Information

School Code: 030022
Established Date: August 2015
Size (9th-12th enrollment): 237

Accreditation-
American Academy of Liberal
Education (AALE) & Cognia

Class of 2024 Facts

of Graduates - 49
Unweighted GPA Range - 2.33 - 4.0
Average Unweighted GPA - 3.43
Attending 4-year college - 37
Attending 2-year college - 7
Taking a gap year - 2
Enlisting in Military - 1
Entering STEM Field - 29
Attending Honors Program - 21
1 Flinn Alternate
1 Dorrance Semi-Finalist

Senior Thesis & Defense

Each senior completes a capstone project known as the Senior Thesis. This is a culmination of the student's years at the academy. It is a year long project completed in addition to the normal honors course load. The student, under the supervision of a faculty advisor explores a scholarly question of their choice through the close reading of three works from the Western Tradition. The final project illustrates a deep understanding of the topic through a 15-20 page paper and oral defense of their work before a faculty, family, and peers. Each student receives .25 credit for successfully completing their thesis and defense.

Great Hearts Academies is a non-profit network of charter schools and the largest "brick and mortar" provider of classical liberal arts education in the nation.

As a public charter, we provide a tuition-free education for K-12th grade students across Arizona and Texas. Great Hearts is subject to open enrollment laws. Typically, our academies receive more applications for enrollment than there are seats available. If this is the case for any grade level at an academy, a lottery will be held. Students who are not admitted through the lottery process will be placed on a waitlist and may be offered admission during that year if a seat becomes available. Our current enrollment for 9-12th grade across Arizona and Texas is 3,940 students.

Our core curriculum is a robust liberal arts education that introduces students to the tools of critical inquiry essential to each discipline and every walk of life. The Great Books curriculum emphasizes the fundamentals of the arts, sciences, and humanities as students are in conversation with many of the most challenging, influential texts in the Western canon. This academic approach prepares college-bound students for the rigors of higher education as well as agreeing with Plato, that the highest goal of education is to become good, intellectually and morally.

Due to our deliberate Great Books curriculum and dedication to Socratic Seminar, no AP or elective courses are offered. Students are prescribed to our set curriculum in 9th-11th grade and can choose one of two tracks in 12th grade.

9TH GRADE CURRICULUM

HONORS HUMANE LETTERS I: THE AMERICAN TRADITION
HONORS GEOMETRY
HONORS BIOLOGY (WITH LAB)
HONORS FOREIGN LANGUAGE (FRENCH I, SPANISH I, LATIN IV)
MUSIC THEORY III/CHOIR
POETRY

10TH GRADE CURRICULUM

HONORS HUMANE LETTERS II: THE RISE OF MODERN EUROPE
HONORS ALGEBRA II/TRIGONOMETRY
HONORS CHEMISTRY (WITH LAB)
HONORS FOREIGN LANGUAGE (FRENCH II, SPANISH II, LATIN V)
HONORS ECONOMICS
MUSIC THEORY IV/CHOIR

11TH GRADE CURRICULUM

HONORS HUMANE LETTERS III: ANCIENT GREECE
HONORS CALCULUS I
HONORS PHYSICS (WITH LAB)
HONORS FOREIGN LANGUAGE (FRENCH III, SPANISH III, GREEK I)
DRAMA I
STUDIO ART

12TH GRADE CURRICULUM

HONORS HUMANE LETTERS IV: ROME TO MODERNITY
HONORS CALCULUS II*
HONORS PHYSICS II (WITH LAB)*
HONORS FOREIGN LANGUAGE (SPANISH IV, FRENCH IV, GREEK II)
HONORS RHETORIC*
HONORS LOGIC & COMPUTATION*
DRAMA II
STUDIO ART
SENIOR THESIS AND DEFENSE
*STUDENTS MAY CHOSE ONE TRACK DURING SENIOR YEAR: CALCULUS & PHYSICS OR LOGIC & RHETORIC

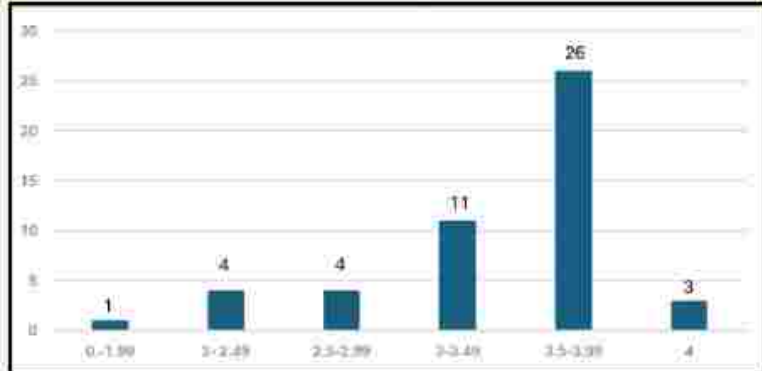
Humane Letters

Humane Letters is a combined History and English course and is the most distinctive feature of the high school curriculum at Lincoln Prep for all 9th - 12th grade students. Humane Letters is a two hour, daily seminar, directed Socratically and revolves around readings from the Western Civilization's best works in philosophy, drama, history, poetry, novels, and essays. This collaborative setting allows for the development of the art of conversation and civil discourse, which includes above all the habit of listening well to both the great authors as well as their peers.

GPA RANGE CLASS OF 2024

GRADING SCALE

Sample College Acceptances



Honors

A (5.00) = 100-93
 A- (4.67) = 92-90
 B+ (4.33) = 89-88
 B (4.00) = 87-83
 B- (3.67) = 80-82
 C+ (3.33) = 79-78
 C (3.00) = 77-73
 C- (2.67) = 72-70
 D+ (2.33) = 69-68
 D (2.00) = 67-63
 D- (1.67) = 62-60
 F (0.00) = 50-0

Non Honors

A (4.00) = 100-83
 A- (3.67) = 92-90
 B+ (3.33) = 89-88
 B (3.00) = 87-83
 B- (2.67) = 82-80
 C+ (2.33) = 79-78
 C (2.00) = 77-73
 C- (1.67) = 72-70
 D+ (1.33) = 69-68
 D (1.00) = 67-63
 D- (0.67) = 62-60
 F (0.00) = 50-0

Abilene Christian University
 Adelphi University
 Arizona State University
 Baldwin Wallace University
 Benedictine University
 BYU - Idaho
 Carleton College
 Chandler Gilbert Community College
 Clarke University
 Coe College
 Colorado School of Mines
 Colorado State University
 Creighton University
 DePaul University
 Duke Kunshan University
 Embry-Riddle Aeronautical University
 Fort Lewis College
 George Washington University
 Georgia Institute of Technology
 Grand Canyon University
 Hawaii Pacific University
 Hiram University
 Kalamazoo College
 Loyola Maryland
 Luther College
 Macalester College
 Miami University
 Montana Technological University
 North Carolina A&T University
 North Park University
 Northeastern University
 Northern Arizona University
 Ohio State University
 Pacific University
 Pennsylvania State University
 Prairie View A&M University
 Purdue University
 Rensselaer University
 Santa Clara University
 St. Olaf College
 Tuskegee University
 United States Air Force Academy
 United States Military Academy
 United States Naval Academy
 University of Alabama
 University of Arizona
 University of Colorado - Boulder
 University of Puget Sound
 University of Washington
 University of Tulsa
 Villanova University
 Wheaton College (IL)
 Whitman College

TEST DATA (Class of 2024)	Middle 50%	Mean	# Tested
ACT	17-25	21.6	48
SAT	1090-1280	1205	11

Leadership Opportunities

There is no formal student counsel, rather our students are assembled into four houses to create spirit and close-knit school culture. Leadership at Lincoln Prep includes only:

- House Consul and Proconsuls are chosen to lead their houses; held by seniors
- Senators, made up of students in all other grades, are chosen to co-lead and plan house events
- Lincoln Mentors Program assists new students through tutoring and mentoring to acclimate to the academic and social culture of the school. They also help at school functions and events.
- Athletic teams have captains who mentor younger athletes and assist coached when needed.

Extracurricular Enrichment

- Archery
- Band
- Chess
- Choir
- World Languages - Latin Champions Club
- World Languages - Korean
- Mock Trial
- Musical Theatre
- Robotics
- Sculpting
- Speech & Debate
- Sports Medicine
- Yearbook

Special Features

- Transcripts of students who attend a Great Hearts Academy in 8th grade will include level 8 Algebra with a P/F grade indicating a student's complete level of mathematical progression.
- The Arizona state requirement of one full credit of U.S. History is fulfilled in 9th grade Humane Letters. The Arizona state requirements of one half credit of U.S. Government is fulfilled in 10th grade Humane Letters.
- For the weighted GPA, all honors courses receive a full extra point for GPA calculation.
- Students are not ranked.
- Transfer credits from outside Great Hearts are not included in GPA calculations.
- Core Course Studies may be reflected on a transcript. This class provides students with instruction and support to enable them to progress academically in core content areas. The instruction supplements but not supplant any core-area course in which students are enrolled.